

# VMware ESXi Update

Connectez-vous sur l'ESXi Host Client avec un user "root"

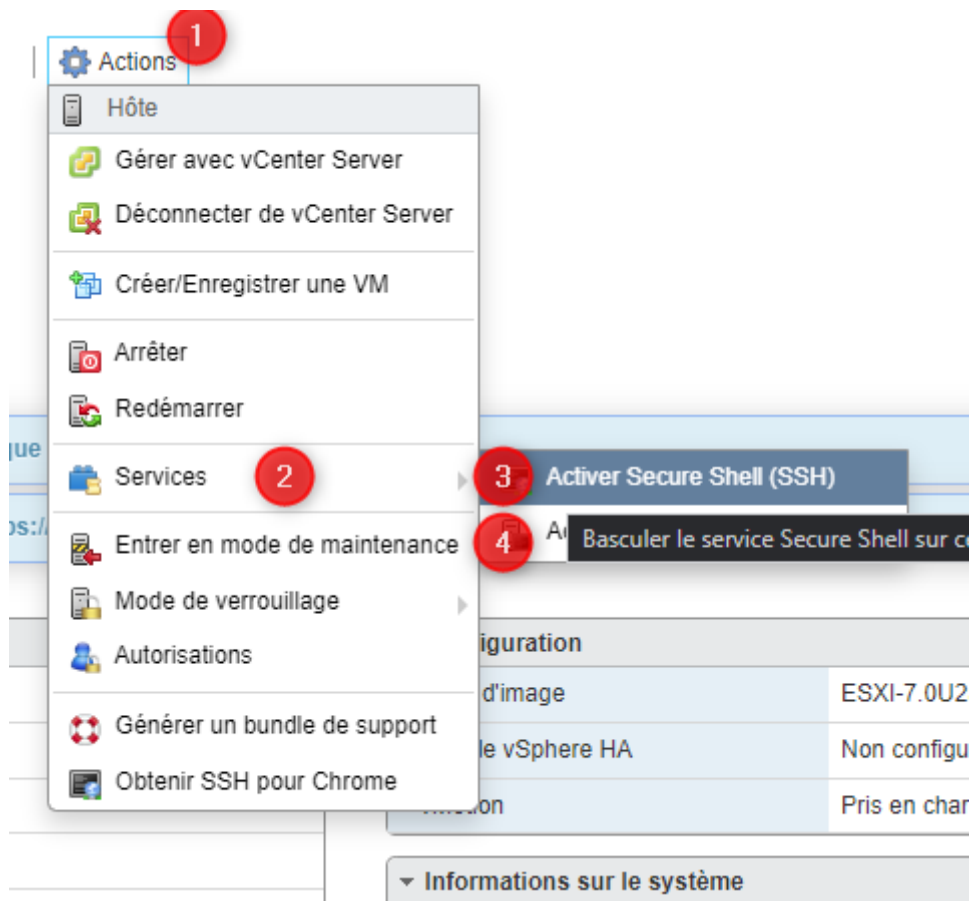
The screenshot displays the VMware ESXi Host Client interface. The top navigation bar includes 'Gérer avec vCenter Server', 'Créer/Enregistrer une VM', 'Arrêter', 'Redémarrer', 'Actualiser', and 'Actions'. The main content area is divided into several sections:

- Statut de l'hôte:** Version 7.0 Update 2, État Normal (connecté à vCenter Server sur 137.74.245.160), Temps de fonctionnement: 677.51 jours.
- Informations système:** CPU (Libre: 19.1 GHz, Utilisé: 90 MHz), Mémoire (Libre: 61.46 Go, Utilisée: 2.51 Go), Stockage (Libre: 5.08 To, Utilisé: 256.23 Go).
- Matériel:** Fabricant: Supermicro, Modèle: X9SRE/X9SRE-3F/X9SRI/X9SRI-3F, CPU: 6 CPUs x Intel(R) Xeon(R) CPU E5-1650 0 @ 3.20GHz, Mémoire: 63.97 Go, Virtual Flash: 0 O utilisée, 0 O capacité.
- Configuration:** Profil d'image: ESXi-7.0U2a-17867351-OVH (OVHcloud SAS), État de vSphere HA: Non configurés, vMotion: Pris en charge.
- Informations sur le système:** Date/Heure sur l'hôte: mercredi, 15 novembre 2023, 12:37:57 UTC; Date d'installation: jeudi, 06 janvier 2022, 22:41:03 UTC; Balise de ressource: To Be Filled By O.E.M.; Numéro de série: 0123456789; Version du BIOS: 3.2a; Date de publication du BIOS: lundi, 31 août 2015, 02:00:00 +0200.

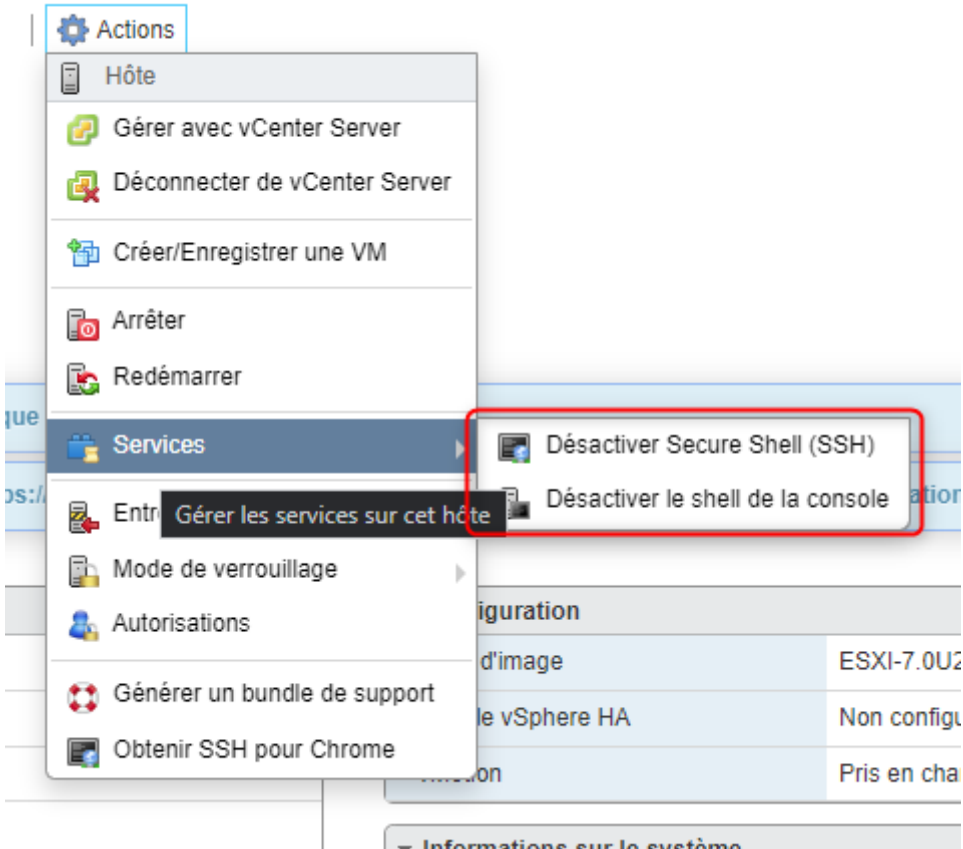
At the bottom, the 'Tâches récentes' table shows the following data:

Tâche	Cible	Initiateur	En file d'attente	Démarré	Résultat	Terminé
Stop Service		root	15/11/2023 13:37:57	15/11/2023 13:37:57	Terminé	15/11/2023 13:37:57
Stop Service		root	15/11/2023 13:37:55	15/11/2023 13:37:55	Terminé	15/11/2023 13:37:55
Exit Maintenance Mode		root	15/11/2023 13:37:48	15/11/2023 13:37:48	Terminé	15/11/2023 13:37:48
Enter Maintenance Mode		root	15/11/2023 13:29:39	15/11/2023 13:29:39	Terminé	15/11/2023 13:30:19
Power Off VM	VMware vCenter Server	root	15/11/2023 13:30:14	15/11/2023 13:30:14	Terminé	15/11/2023 13:30:15
Power Off VM	LANTEST	root	15/11/2023 13:30:14	15/11/2023 13:30:14	Terminé	15/11/2023 13:30:15

Allez dans le menu "Actions" > "Services et activer le "SSH" et la "Console"



Une fois activé ça donne ceci:



Connectez-vous en SSH sur l'ESXi (avec l'utilisateur "root")

```
The time and date of this login have been sent to the system logs.  
  
WARNING:  
All commands run on the ESXi shell are logged and may be included in  
support bundles. Do not provide passwords directly on the command line.  
Most tools can prompt for secrets or accept them from standard input.  
  
VMware offers supported, powerful system administration tools. Please  
see www.vmware.com/go/sysadmintools for details.  
  
The ESXi Shell can be disabled by an administrative user. See the  
vSphere Security documentation for more information.  
[root@esxi02:~] █
```

Contrôlez la version de l'ESXi actuel

```
esxcli software profile get
```

```
[root@esxi02:~] esxcli software profile get
ESXi-7.0U2a-17867351-OVH
Name: ESXi-7.0U2a-17867351-OVH
Vendor: OVHcloud SAS
Creation Time: 2022-01-06T22:41:46
Modification Time: 2023-11-15T12:39:10
Stateless Ready: True
Description:

VBs: atlantic 1.0.3.0-8vmw.702.0.0.17867351, bnxtnet 216.0.50.0-34vmw.702.0.0.17867351, bnxtnet 216.0.50.0-19vmw.702.0.0.17867351, brcmfcfe 12.0.1500.1-2vmw.702.0.0.17867351, brcmvmfefe 12.0.298.1-1vmw.702.0.0.17867351, clusterstore 7.0.2-0.0.17867351, cpu-microcode 7.0.2-0.0.17867351, crx 7.0.2-0.0.17867351, elx-esx-libelxima.so 12.0.1200.0-4vmw.702.0.0.17867351, elxiscsi 12.0.1200.0-8vmw.702.0.0.17867351, elxnet 12.0.1250.0-5vmw.702.0.0.17867351, esx-base 7.0.2-0.0.17867351, esx-dvfilter-generic-fastpath 7.0.2-0.0.17867351, esx-ui 1.34.0-17417756, esx-update 7.0.2-0.0.17867351, esx-xserver 7.0.2-0.0.17867351, gc 7.0.2-0.0.17867351, i486nu 1.0.1.13-1vmw.702.0.0.17867351, iavmd 2.0.0.1152-1vmw.702.0.0.17867351, icen 1.0.0.10-1vmw.702.0.0.17867351, ighn 1.4.11.2-1vmw.702.0.0.17867351, irdman 1.3.1.19-1vmw.702.0.0.17867351, iser 1.1.0.1-1vmw.702.0.0.17867351, ixgben 1.7.1.35-1vmw.702.0.0.17867351, loadex 7.0.2-0.0.17867351, lpfc 12.0.298.3-1vmw.702.0.0.17867351, lpnic 11.4.62.0-1vmw.702.0.0.17867351, lsi-mr3 7.716.03.00-1vmw.702.0.0.17867351, lsi-msgpt2 20.00.06.00-3vmw.702.0.0.17867351, lsi-msgpt3 17.00.10.00-2vmw.702.0.0.17867351, lsi-msgpt35 17.00.02.00-1vmw.702.0.0.17867351, lsuv2-hpv2-hpsa-plugin 1.0.0-3vmw.702.0.0.17867351, lsuv2-intelv2-nvme-vmd-plugin 2.0.0-2vmw.702.0.0.17867351, lsuv2-lsiv2-drivers-plugin 1.0.0-5vmw.702.0.0.17867351, lsuv2-nvme-pcie-plugin 1.0.0-1vmw.702.0.0.17867351, lsuv2-oem-dell-plugin 1.0.0-1vmw.702.0.0.17867351, lsuv2-oem-hp-plugin 1.0.0-1vmw.702.0.0.17867351, lsuv2-oem-lenovo-plugin 1.0.0-1vmw.702.0.0.17867351, lsuv2-smartpqi2-plugin 1.0.0-6vmw.702.0.0.17867351, mtip32xx-native 3.9.0-1vmw.702.0.0.17867351, native-misc-drivers 7.0.2-0.0.17867351, net100 0.8.4-11vmw.702.0.0.17867351, nenic 1.0.33.0-1vmw.702.0.0.17867351, nfnic 4.0.0.03-1vmw.702.0.0.17867351, nhpsa 70.0051.0.100-2vmw.702.0.0.17867351, nmlx4-core 3.19.16.8-2vmw.702.0.0.17867351, nmlx4-en 3.19.16.8-2vmw.702.0.0.17867351, nmlx4-rdma 3.19.16.8-2vmw.702.0.0.17867351, nmlx5-core 4.19.16.10-1vmw.702.0.0.17867351, nmlx5-rdma 4.19.16.10-1vmw.702.0.0.17867351, rgt3 4.1.5.0-8vmw.702.0.0.17867351, nvme-pcie 1.2.3.11-1vmw.702.0.0.17867351, nvmerdma 1.0.2.1-1vmw.702.0.0.17867351, nvmxnet3 2.0.0.30-1vmw.702.0.0.17867351, nvmxnet3-ens 2.0.0.22-1vmw.702.0.0.17867351, pvscst 0.1-2vmw.702.0.0.17867351, qcnic 1.0.15.0-11vmw.702.0.0.17867351, qedentv 3.40.5.53-20vmw.702.0.0.17867351, qedrntv 3.40.5.53-16vmw.702.0.0.17867351, qfle3 1.0.67.0-14vmw.702.0.0.17867351, qfle3f 1.0.51.0-19vmw.702.0.0.17867351, qfle3i 1.0.15.0-12vmw.702.0.0.17867351, qflge 1.1.0.11-1vmw.702.0.0.17867351, qlnativefc 4.1.14.0-5vmw.702.0.0.17867351, rste 2.0.2.0088-7vmw.702.0.0.17867351, sfvnc 2.4.0.2010-4vmw.702.0.0.17867351, smartpqi 70.4000.0.100-6vmw.702.0.0.17867351, tools-light 11.2.5.17337674-17867351, vdfs 7.0.2-0.0.17867351, vmkata 0.1-1vmw.702.0.0.17867351, vmkfcfe 1.0.0.2-1vmw.702.0.0.17867351, vmkusb 0.1-1vmw.702.0.0.17867351, vmw-ahci 2.0.9-1vmw.702.0.0.17867351, vmware-esx-esxcli-nvme-plugin 1.2.0.42-1vmw.702.0.0.17867351, vsan 7.0.2-0.0.17867351, vsanhealth 7.0.2-0.0.17867351
```

Lancer le mode maintenance

```
esxcli system maintenanceMode set --enable true
```

```
[root@esxi02:~] esxcli system maintenanceMode set --enable true
[root@esxi02:~] |
```

Pour contrôler que le mode maintenance est bien activé allez sur l'ESXi Host Client et le logo du serveur devrait s'afficher comme ceci:



Autorisez le trafic http en modifiant les paramètres du pare-feu intégré de l'hôte ESXi

```
esxcli network firewall ruleset set -e true -r httpClient
```

```
[root@esxi02:~] esxcli network firewall ruleset set -e true -r httpClient
```

Répertorier les profils fournis par VMware pour ESXi dans les référentiels VMware

```
esxcli software sources profile list -d https://hostupdate.vmware.com/software/VUM/PRODUCTION/main/vmw-depot-index.xml
```

Filtrez avec la commande "grep"

```
esxcli software sources profile list -d https://hostupdate.vmware.com/software/VUM/PRODUCTION/main/vmw-depot-index.xml | grep ESXi-X.Y.Z
```

Ceux qui nous donnent ceci:

```
[root@esxi02:~] esxcli software sources profile list -d https://hostupdate.vmware.com/software/VUM/PRODUCTION/main/vmw-depot-index.xml | grep ESXi-8
ESXi-8.0.0-20513097-standard VMware, Inc. PartnerSupported 2022-09-23T18:59:28 2022-09-23T18:59:28
ESXi-8.0.0-20513097-no-tools VMware, Inc. PartnerSupported 2022-09-23T18:59:28 2022-09-23T18:59:28
ESXi-8.0a-20842819-standard VMware, Inc. PartnerSupported 2022-12-08T00:00:00 2022-12-08T00:00:00
ESXi-8.0a-20842819-no-tools VMware, Inc. PartnerSupported 2022-12-08T00:00:00 2022-11-24T05:47:13
ESXi-8.0sb-21203431-standard VMware, Inc. PartnerSupported 2023-02-14T00:00:00 2023-02-14T00:00:00
ESXi-8.0sb-21203431-no-tools VMware, Inc. PartnerSupported 2023-02-14T00:00:00 2023-01-30T05:35:42
ESXi-8.0b-21203435-standard VMware, Inc. PartnerSupported 2023-02-14T00:00:00 2023-02-14T00:00:00
ESXi-8.0b-21203435-no-tools VMware, Inc. PartnerSupported 2023-02-14T00:00:00 2023-01-30T07:21:34
ESXi-8.0c-21493926-standard VMware, Inc. PartnerSupported 2023-03-30T00:00:00 2023-03-30T00:00:00
ESXi-8.0c-21493926-no-tools VMware, Inc. PartnerSupported 2023-03-30T00:00:00 2023-03-24T16:36:33
ESXi-8.0U1-21495797-standard VMware, Inc. PartnerSupported 2023-04-18T00:00:00 2023-04-18T00:00:00
ESXi-8.0U1-21495797-no-tools VMware, Inc. PartnerSupported 2023-04-18T00:00:00 2023-03-25T02:02:48
ESXi-8.0U1a-21813344-standard VMware, Inc. PartnerSupported 2023-06-01T00:00:00 2023-06-01T00:00:00
ESXi-8.0U1a-21813344-no-tools VMware, Inc. PartnerSupported 2023-06-01T00:00:00 2023-05-24T06:02:20
ESXi-8.0U1sc-22082334-standard VMware, Inc. PartnerSupported 2023-07-27T00:00:00 2023-07-27T00:00:00
ESXi-8.0U1sc-22082334-no-tools VMware, Inc. PartnerSupported 2023-07-27T00:00:00 2023-07-14T01:55:09
ESXi-8.0U1c-22088125-standard VMware, Inc. PartnerSupported 2023-07-27T00:00:00 2023-07-27T00:00:00
ESXi-8.0U1c-22088125-no-tools VMware, Inc. PartnerSupported 2023-07-27T00:00:00 2023-07-15T02:41:02
ESXi-8.0U2-22380479-standard VMware, Inc. PartnerSupported 2023-09-21T00:00:00 2023-09-21T00:00:00
ESXi-8.0U2-22380479-no-tools VMware, Inc. PartnerSupported 2023-09-21T00:00:00 2023-09-04T22:07:43
```

Vérifiez les paquets qui seront installés avant d'exécuter la mise à jour

```
esxcli software profile update -d https://hostupdate.vmware.com/software/VUM/PRODUCTION/main/vmw-depot-index.xml -p [PROFILE] --dry-run
```

```
[root@esxi02:~] esxcli software profile update -d https://hostupdate.vmware.com/software/VUM/PRODUCTION/main/vmw-depot-index.xml -p ESXi-8.0U2-22380479-standard --dry-run
```

Exécutez l'installation de la mise à jour

```
esxcli software profile update -d https://hostupdate.vmware.com/software/VUM/PRODUCTION/main/vmw-depot-index.xml -p [PROFILE]
```

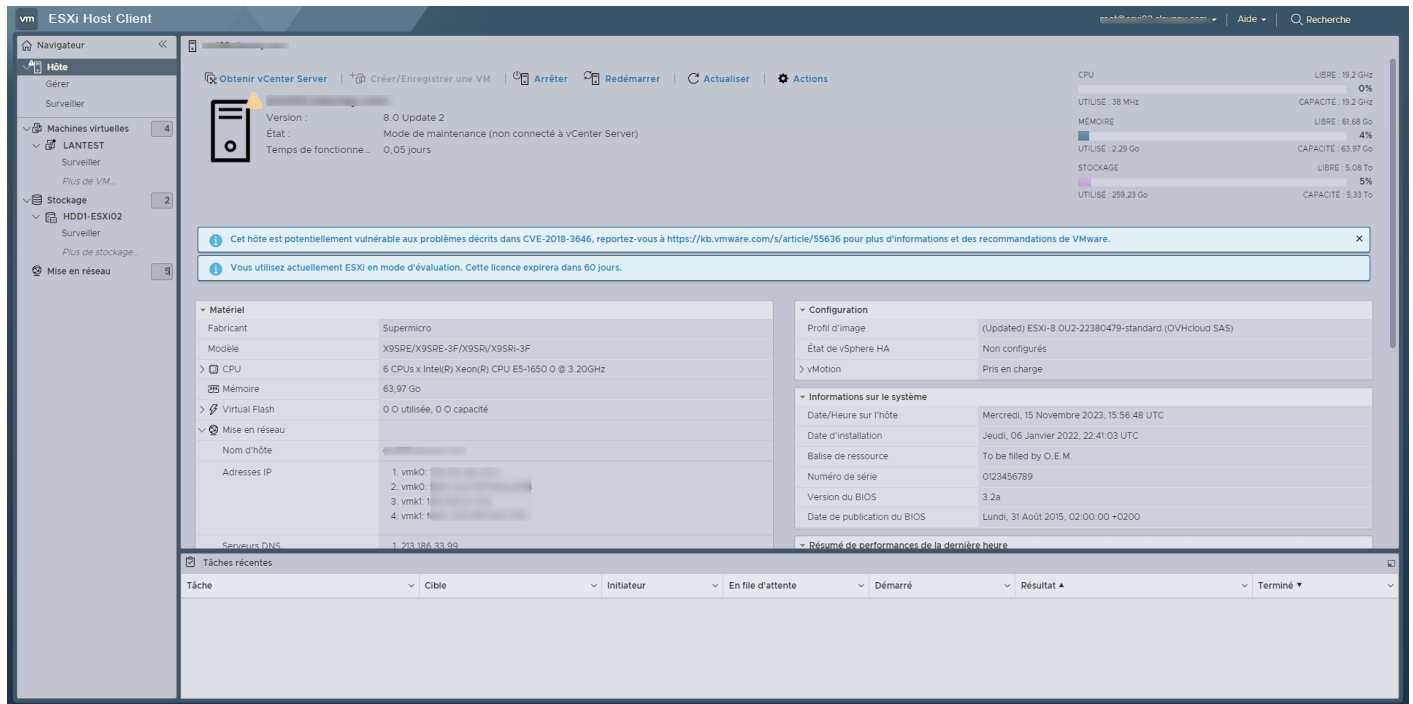
En cas d'avertissement de hardware bientôt plus supporté ajouter "--no-hardware-warning"

```
esxcli software profile update -d https://hostupdate.vmware.com/software/VUM/PRODUCTION/main/vmw-depot-index.xml -p [PROFILE] --no-hardware-warning
```

Si tout est correct redémarrez l'ESXi pour que les modifications soient prises en compte

```
reboot
```

Une fois redémarré connectez-vous sur l'ESXi Host Client avec un user "root" et-vous constaterez la nouvelle mise à jour installée



Quitter le mode maintenance

```
esxcli system maintenanceMode set --enable false
```

Revision #2

Created 15 November 2023 15:05:23 by Admin

Updated 15 November 2023 16:23:44 by Admin