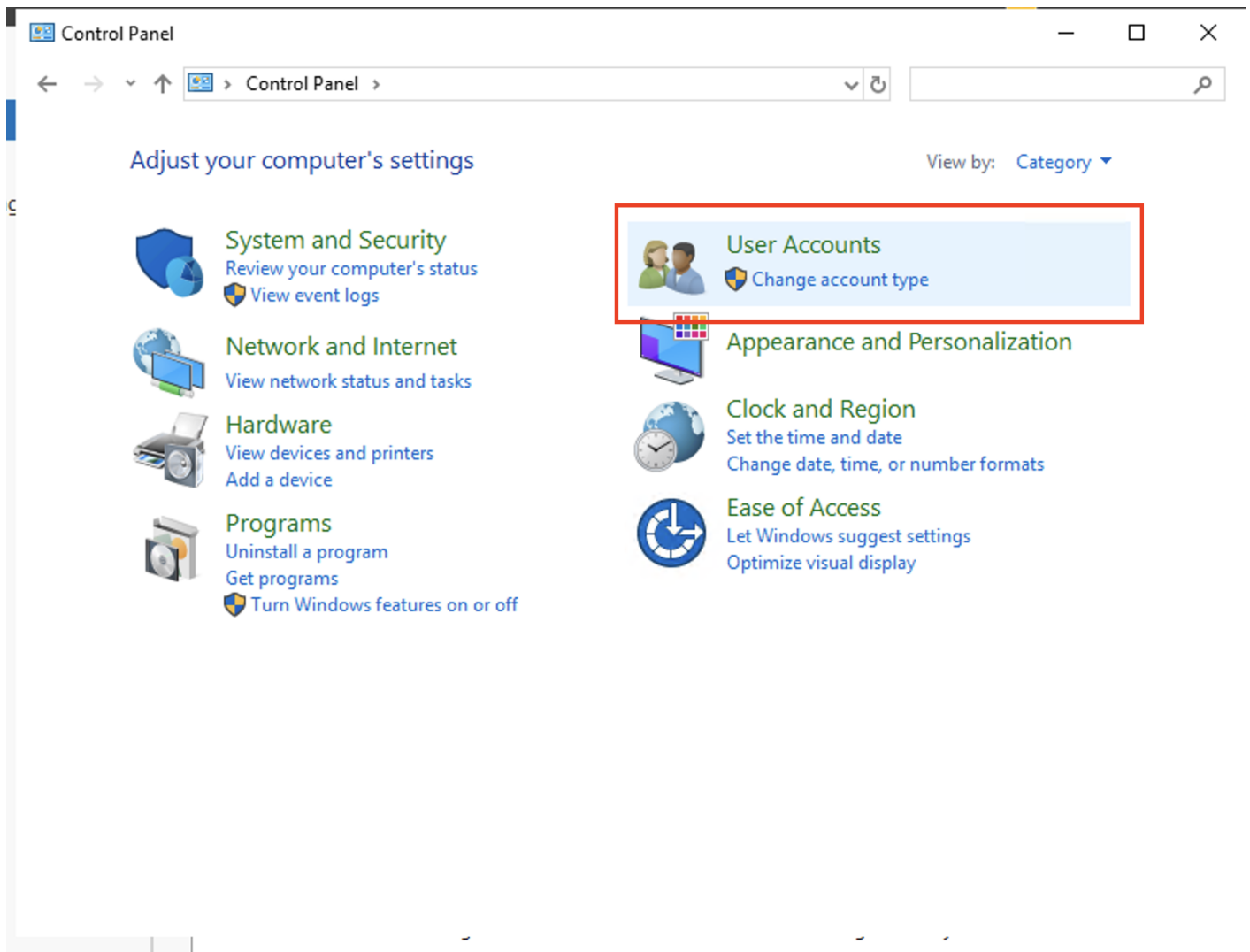


# Ajouter un compte administrateur AD sur un PC/VM en local

Une fois l'utilisateur créé dans l'AD

Aller dans le Panneau de Configuration du PC/VM



Se connecter avec le compte Administrateur LOCAL de la machine

Do you want to allow this app to make changes to your device?



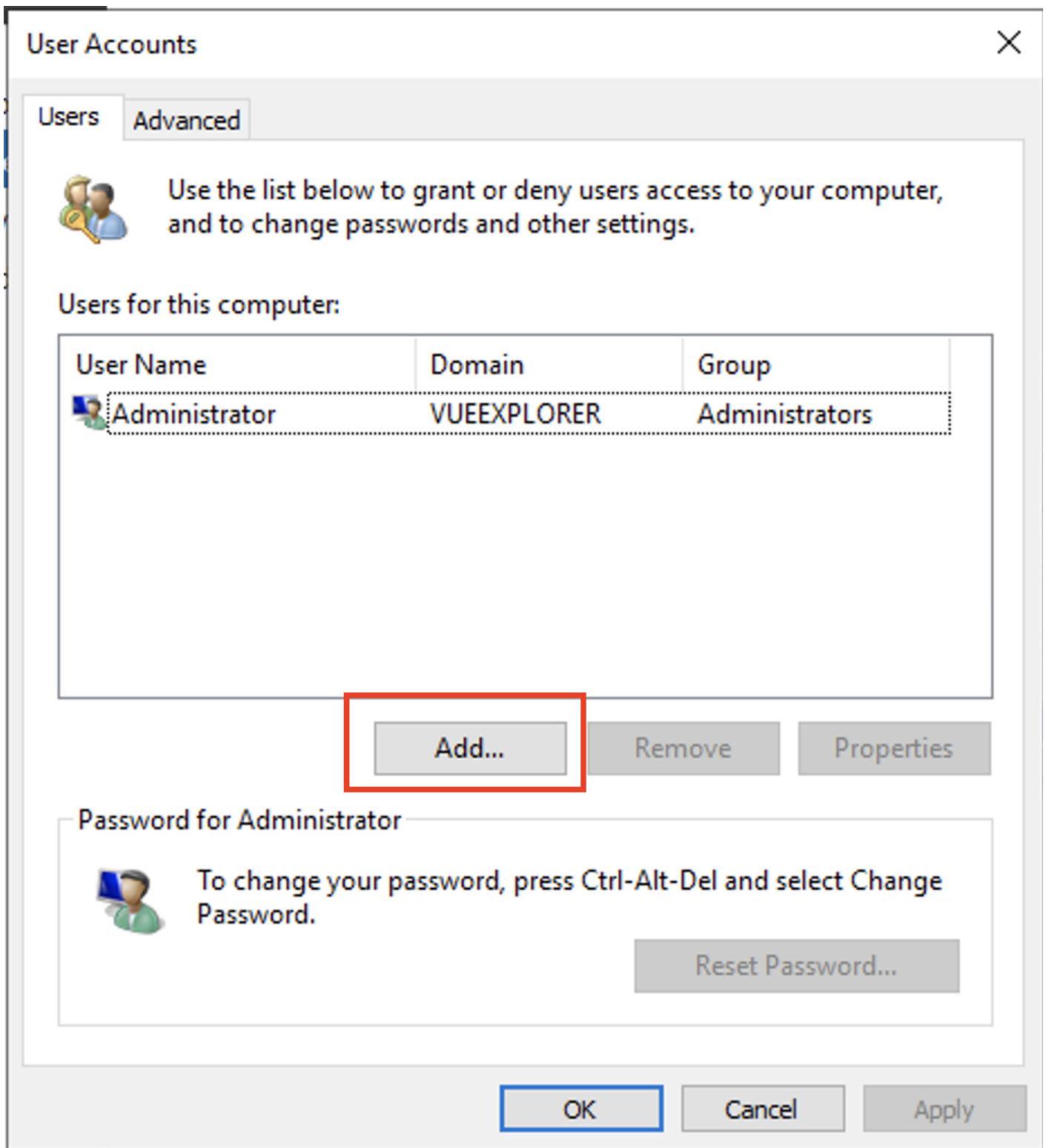
## Advanced User Accounts Control Panel

Verified publisher: Microsoft Windows

[Show more details](#)

To continue, enter an admin user name and password.

Domain: VUEEXPLORER



ajouter les utilisateurs de l'AD

(même les comptes administrateur)



← Add a user

## Add a domain account

Enter someone's user name and domain to give that person permission to use this computer.

User name:

Domain:

Windows 10 'Add a user' dialog box. The title bar shows 'Add a user' with a back arrow and a close button. The main text asks 'What level of access do you want to grant this user?'. There are three radio button options: 'Standard' (unselected), 'Administrator' (selected), and 'Other:' (unselected). The 'Other:' option has a dropdown menu. At the bottom right, there are 'Next' and 'Cancel' buttons.

← Add a user

What level of access do you want to grant this user?

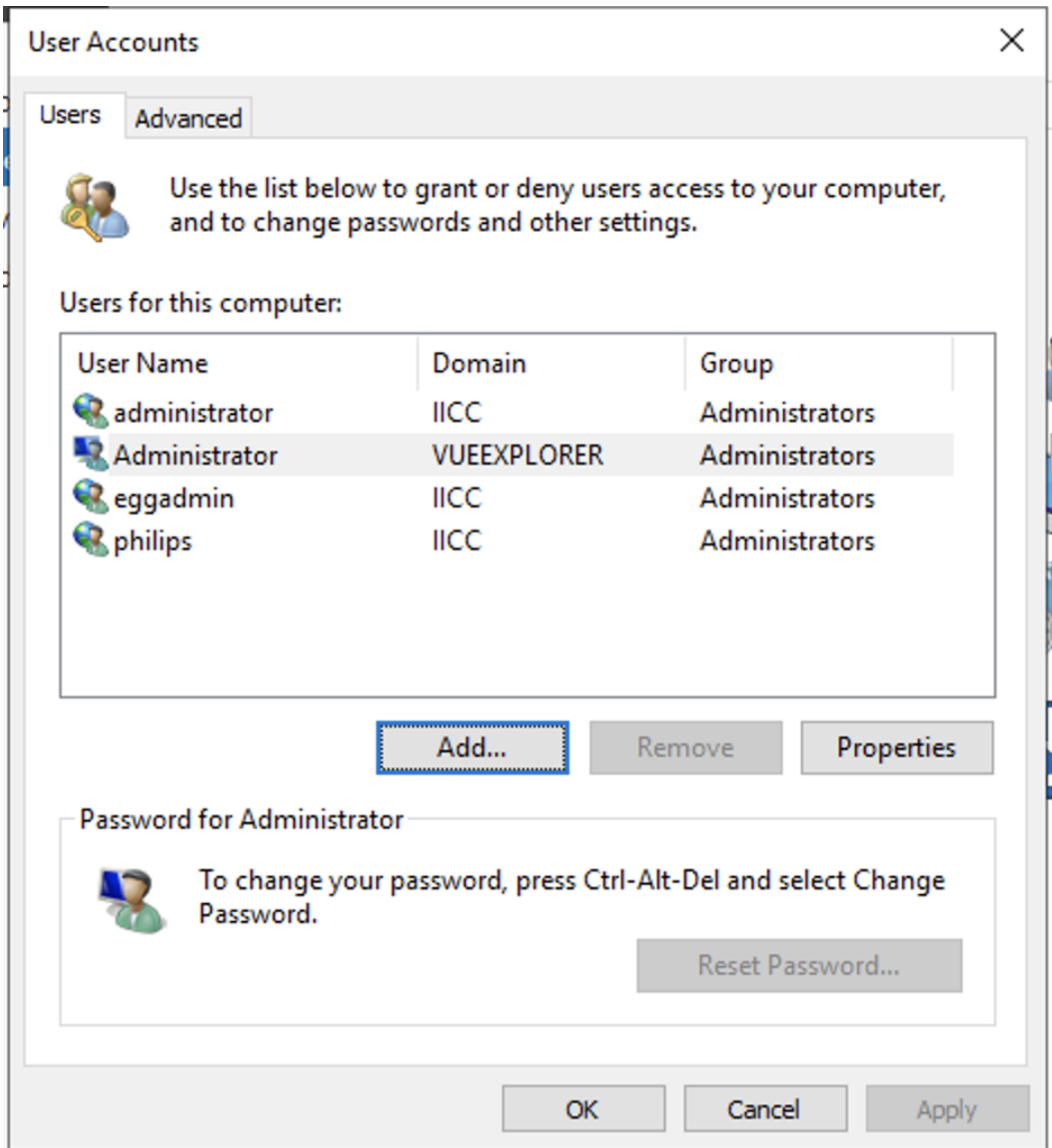
**Standard**  
Standard accounts can use most software and change system settings that don't affect other users or the security of this PC.

**Administrator**  
Administrators have complete control over the PC. They can change any settings and access all of the files and programs stored on the PC.

**Other:** [Dropdown menu]

Next Cancel

Ajouter autant de compte que nécessaire



Redémarrer le PC/VM

(ne pas oublier de le faire a chaque utilisateur créer dans l'AD)

Revision #3

Created 25 July 2023 11:39:38 by Admin

Updated 25 July 2023 11:48:52 by Admin